

*The **real** cost of patient safety*



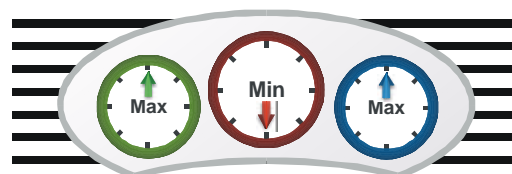
*It is very difficult to attach a real cost to patient safety
Everybody's been talking and speculating about it ...
We've been tackling the cost of patient safety head on*



For the first time ever in Australia, healthcare software experts *Patient Safety International* and *PowerHealth Solutions* have joined forces to research the cost of the patient safety issue.

The Children's Hospital at Westmead NSW is using Patient Safety International's Advanced Incident Management System (AIMS) to collect data on episodes of care with adverse events.

This incident information is being fed into the PowerHealth Solutions clinical costing system, PowerPerformance Management, where the adverse episodes is compared with similar non-adverse episodes.



PowerPerformance Management

A part of the PowerBusiness Analytics suite

With this information, the hospital can calculate the cost of the adverse events for different episode types and begin to understand actual dollar values.

Understanding the real cost of incidents is crucial to achieving a hospital's mission of delivering quality care with efficient resource utilisation and ensuring safety for all patients.



Phone: +61-8-8271-8252
Email: aims.info@patientsafetyint.com
Web: www.patientsafetyint.com



PowerHealth Solutions

Phone: +61-8-8410-6404
Email: pvenables@powerhealthsolutions.com
Web: www.powerhealthsolutions.com